

KEY

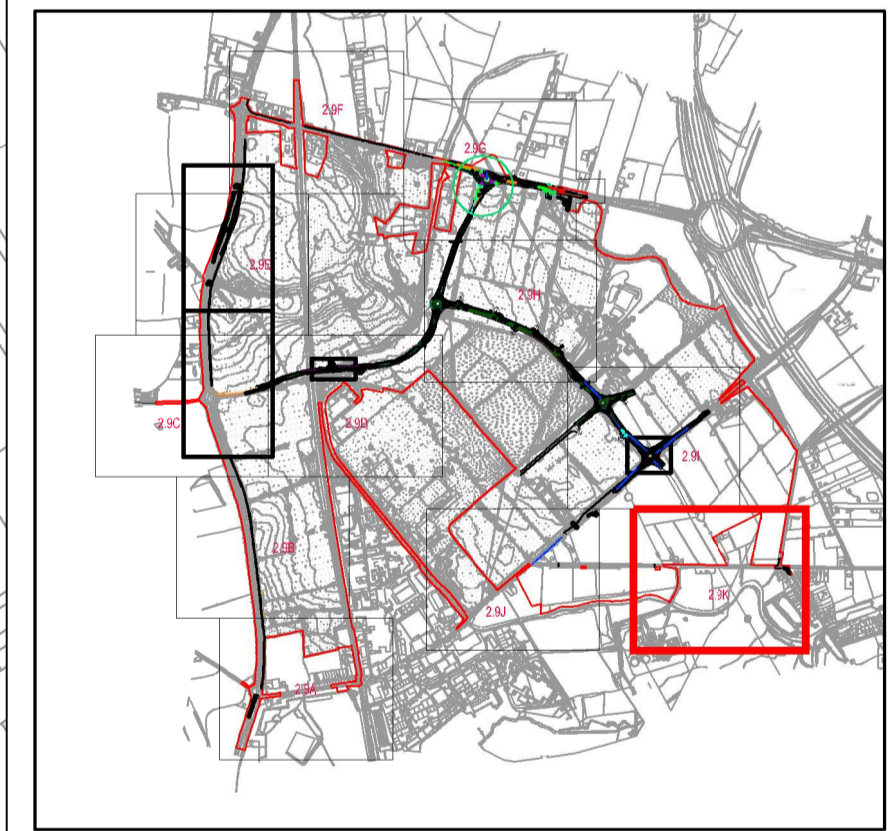
- ORDER LIMITS
- CYCLEWAY / FOOTWAY
- FOOTWAY
- TACTILE PAVING

NOTE:

LIMITS OF DEVIATION SHOWN ON THE WORKS PLANS (DOCUMENT SERIES 2.2) AND SET OUT IN ARTICLE 4 OF THE DEVELOPMENT CONSENT ORDER.

CHANGES TO DOCUMENT 2.9K SINCE DCO SUBMISSION:

- MAY 2019 -
- VIEWPORT ADJUSTED (ALTERATION OF SHEET LAYOUT) TO REMAIN IN LINE WITH DOCUMENTS 2.9I AND 2.9J.



<b>Project</b>			
THE WEST MIDLANDS RAIL FREIGHT INTERCHANGE ORDER 201X			
<b>Drawing Status</b>			
SUBMISSION			
<b>Drawing Title</b>		<b>Drawing Size A1</b>	
GENERAL ARRANGEMENT PLAN		111	
<b>Regulation</b>	<b>Document</b>		
5 (2) (o)	2.9K		
<b>Drawn NW</b>	<b>Date</b> JUNE 2018	<b>Scale</b> 1: 1000	<b>Reviewed</b> JF
<b>Drawing No.</b>			<b>Rev.</b>
WSP-70001979-GA-111			G